

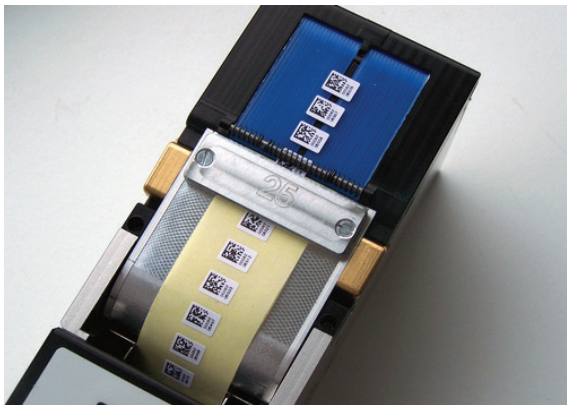
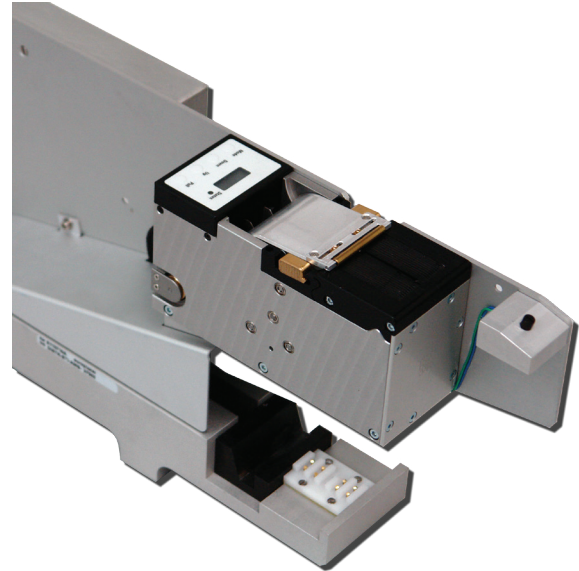
PRODUCT INFORMATION

DESCRIPTION

Developed in conjunction with German company AMS, the EUROPLACER's programmable label feeder (E 113715) is the flexible solution for automatic label placement.

It is fully 'intelligent' featuring the same intelligence as the other feeders in the Europlacer range.

This Label Feeder is the perfect complement to the Europlacer Total Traceability option. The reel contains pre-printed labels embedding serial numbers. The base of the feeder is designed by Europlacer, it embeds the same electronic board as other Europlacer Intelligent feeders, so it can be used with the whole range of Europlacer machines like any other feeder. Set-up of different label types can be done easily without replacing any parts. A user-friendly menu on the feeder itself allows feeding and controls.



TECHNICAL DETAILS

Depending on label type, either standard or special (on demand) nozzles will be used for picking.

- Tape width: Max: 36,2 mm Min: 8 mm
- Label width: Max: 35 mm Min: 4 mm
- Label height: Max: 30 mm Min: 3 mm
- Max. strength of the carrier tape: 140 g/m²
- Transport speed: 10-120mm/s <0,25sec. (Label 6,35x6,35mm)

! Wide version of this feeder (E113981) allows maximum label size of 55x55mm.

APPROVED LABELS



Temperatures: -40°C to + 350°C
 Durability: Chemicals, mechanical (scratches)
 Print: Customer-specific
 Shapes: **Further dimensions upon request**
 Material: **Paper, polypropylene, polyethylene, polyester, Polyamide**

Size	Material UL	Qty. 'per Roll	A mm	B mm	C mm	Recommended Colour-Ribbon*
5,00 x 5,00 mm	Polyimide, white	10.000	5,00	5,00	2,93	UL – Approved
6,00 x 4,00 mm	Polyimide, white	10.000	6,00	4,00	3,02	UL – Approved
6,00 x 6,00 mm	Polyimide, white	10.000	6,00	6,00	3,07	UL – Approved
6,35 x 6,35 mm	Polyimide, white	10.000	6,35	6,35	3,60	UL – Approved
7,00 x 7,00 mm	Polyimide, white	10.000	7,00	7,00	2,93	UL – Approved
8,00 x 8,00 mm	Polyimide, white	10.000	8,00	8,00	3,04	UL – Approved
10,00 x 10,00 mm	Polyimide, white	10.000	10,00	10,00	2,09	UL – Approved
10,30 x 9,50 mm	Polyimide, white	10.000	10,30	9,50	3,04	UL – Approved
15,00 x 6,00 mm	Polyimide, white	10.000	15,00	6,00	2,78	UL – Approved
16,51 x 5,08 mm	Polyimide, white	10.000	16,51	5,08	2,86	UL – Approved
20,00 x 8,00 mm	Polyimide, white	10.000	20,00	8,00	2,58	UL – Approved
22,85 x 6,35 mm	Polyimide, white	10.000	22,85	6,35	3,17	UL – Approved
25,00 x 9,80 mm	Polyimide, white	10.000	25,00	9,80	2,4	UL – Approved

*with UL-approval

As part of our policy of continuous development, specifications are subject to change without prior notice.