

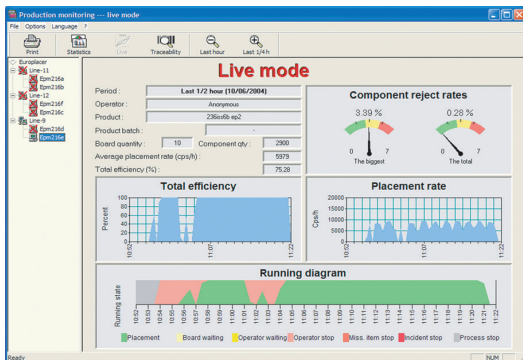
PRODUCT INFORMATION

FEATURES

Production and machine performance feedback is essential in today's manufacturing environments. Production quantity data is necessary for management and reporting purposes, whilst performance data is crucial to allow analysis of system efficiency levels if optimum process quality and productivity are to be achieved.

PROMON is the 'production instrument panel' for your Europlacer assembly machines providing an easy to use single source of production management data. It continually collects and stores all of the production data from your machine, line or lines allowing viewing and analysis locally or remotely in real time (Live Mode) or for a selected period (Statistical Mode).

In addition, PROMON is the perfect tool to analyze and search into your traceability data.



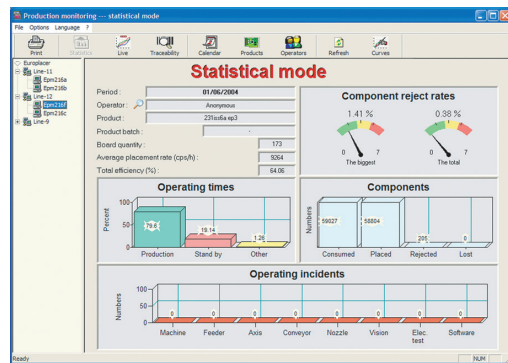
STATISTICAL MODE

With all data being automatically archived PROMON provides users with a powerful tool to assess efficiency, incidents and component consumption over specified time periods. Review by individual machine or whole lines and by single or multiple production batches is all fully selectable.

Product and component traceability is supported by Europlacer's comprehensive batch number/code logging system.

LIVE MODE

Allows you to monitor shop floor activity. With information refreshed every 30 seconds PROMON enables users to view and diagnose data in real time. A running diagram of system status is updated virtually 'as it happens'. Any deviation from production targets is detected immediately allowing fast corrective action.



TRACEABILITY MODE

Allows the search and analysis of data recorded in the traceability files created by the Total Traceability option on the machines.

Find easily the fully detailed placement reports of the products, searching by product code, product batch, board serial number, item code or item batch.

BENEFITS

- All machine operating time is recorded and categorised for display to the user.
- Print or generate reports on production, performance and component usage.
- Calculates and displays placement and efficiency rates based on customer set parameters.
- Analyse by individual product, all production or operator.
- Users can set own threshold levels for colour coded performance display by feeder or part.
- View 'lost' time and key events.