

eurolacer



// Europlacer printer platforms are the result of years of meticulous materials, manufacturing and process control excellence. Complementing our pick and place equipment range, the ep700 Series is engineered to deliver streamlined performance at low ownership costs for high, medium and low-volume production applications. //

AUTOMATION

Flexible automation is at the very centre of the platform. ep700 Series printers are comprehensively equipped with almost every parameter fully programmable.

That's how they address the critical demands of fast set up and product changeover to streamline your assembly throughput. Automation features include closed-loop print head control, fully programmable board stops and pneumatic board clamping, as well as direct SMEMA compatibility for easy automated SMT production line integration.

The ep700 Series is the ideal platform for low and medium volume assembly in any challenging high-mix surface mount environment.

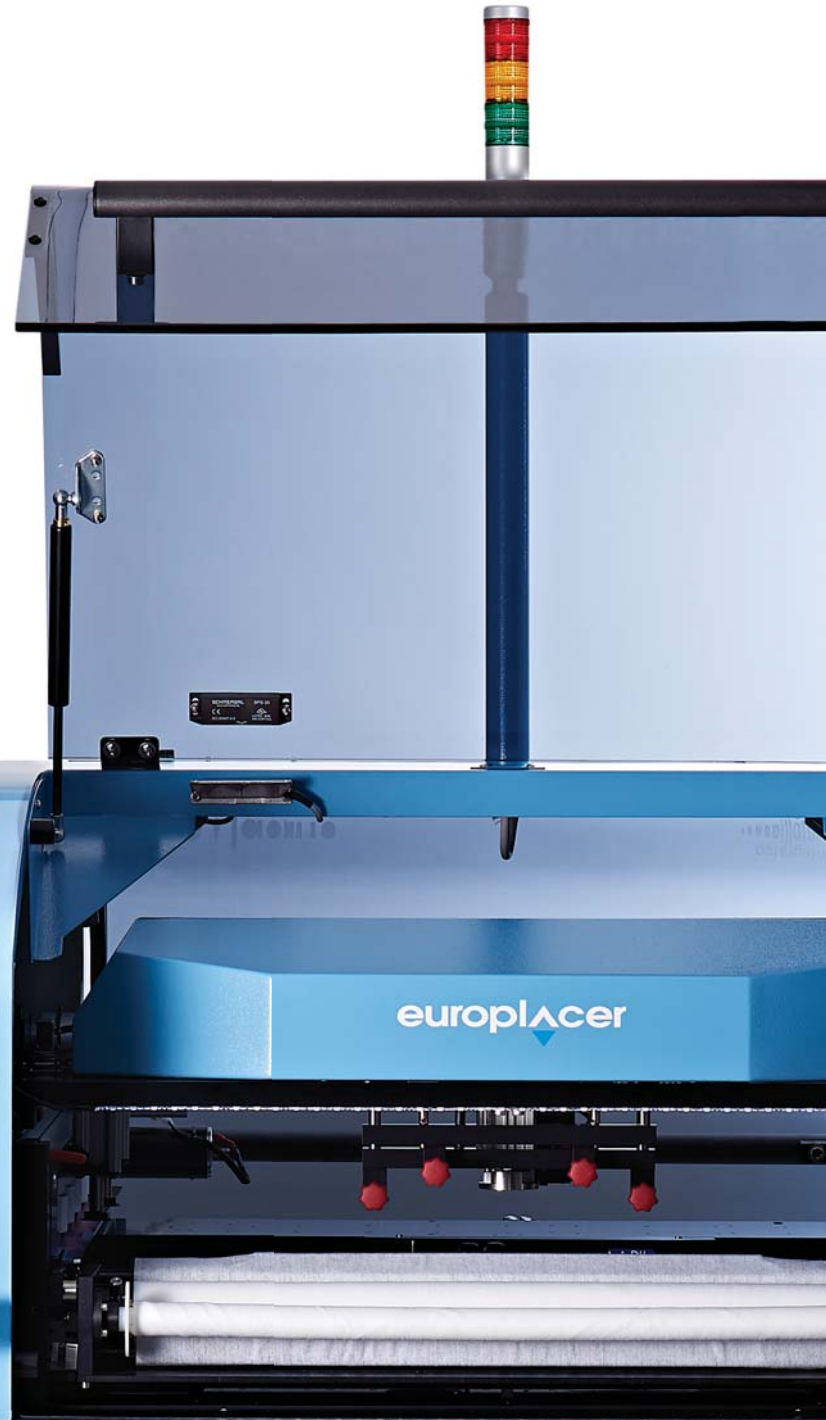
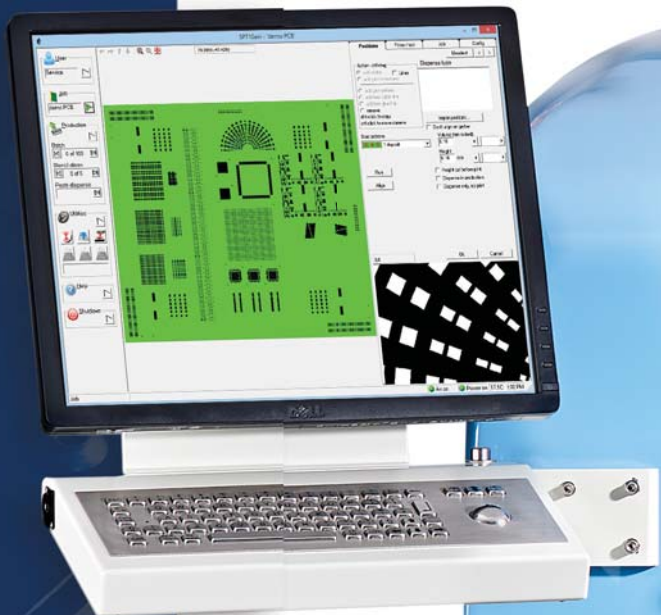
ACCURACY

Exceptional repeatability and print accuracy stem from meticulous alignment. Our patented Dual Roving camera (DRc) technology precisely aligns the board and stencil, and checks for solder paste presence on the stencil before printing. DRc innovations include SmartCal, a zero-cost calibration utility designed to maximise and maintain your process window and deliver optimum performance for the life of the printer platform.

ASSURANCE

Europlacer printer platforms are refined, robust, design-optimised products built to last. Be assured that ep700 Series printers will perform identically in a decade as they do when new.

EP710



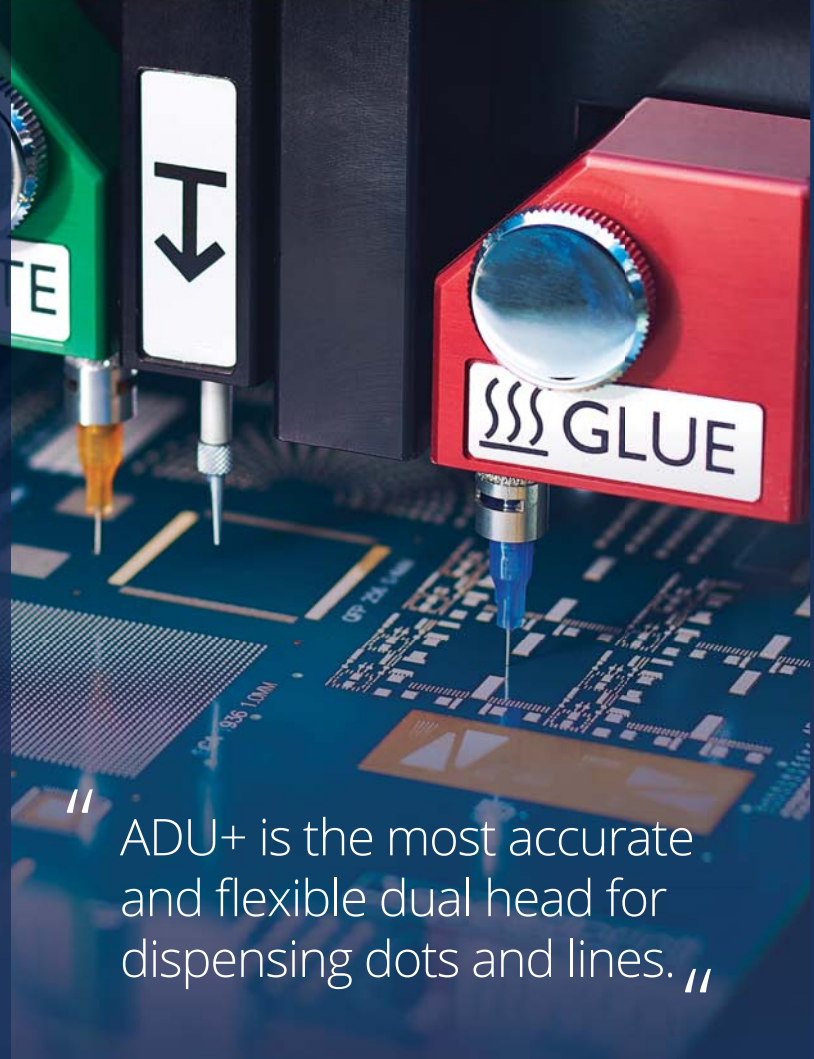
EP710

INLINE PRINTING

DUAL SYRINGE DISPENSING DELIVERS PASTE AND GLUE AS DOTS OR LINES

Europlacer's ep710avi printer can optionally deploy the unique Advanced Dispense Unit (ADU) or the ADU+ to dispense a wide range of media including paste, glue and flux via removable temperature-controlled modules. Simple drag & drop programming imports from Gerber files, allowing full and easy customisation of deposits as dots or lines onto any substrate.

Using latest-generation motor drive and control technology, including 1 micron resolution linear encoders on all axes, ep700 Series platforms deliver exceptional throughput capabilities for even the most demanding high volume applications. With the addition of the Velocity or Velocity+ option, the printers achieve best-in-class speeds of 8-second or 6-second core cycle times.



“ ADU+ is the most accurate and flexible dual head for dispensing dots and lines. ”

COMPREHENSIVELY EQUIPPED WITH ADVANCED FEATURES AS STANDARD

- Highly efficient vacuum-assisted under stencil cleaning. Fully programmable. Wet or dry, with or without vacuum
- Auto stencil load and eject streamlines product changeover
- Closed loop dual squeegee control for print process optimisation. Fully programmable print parameters
- Defect prevention with programmable Optical Paste Bead Management. Verifies solder paste presence on the stencil. Alerts to insufficient volume. Safeguards quality
- SmartCal cost-free instant process calibration
- Maximum positional accuracy with 1 micron resolution linear encoders on all axes



3IGPC
34V-8
PC/GE
1307



ONE PLATFORM
NO LIMITS



EP710

SPECIFICATIONS

Max board size	610mm (x) x 515mm (y)	Clamping thickness	0.2mm to 8mm
Min board size	45mm x 45mm	Board stop	fully programmable
Machine alignment repeatability	12.5µm @ 6 sigma 2Cpk	Cycle time	11.5 secs (standard)
Full process repeatability	20µm @ 6 sigma 2Cpk	Up/down line protocol	SMEMA compatible
X/Y PCB alignment	+/- 5mm	Operating system	Microsoft Windows™ 7 or higher
Stencil load/unload	automatic	Power consumption	13 Amps
Squeegees material	metal or polyurethane	Power supply	110V to 240V AC, single phase
Squeegee pressure	1Kg to 20Kg	Operating temperature	10°C to 35°C @ 30% to 50% RH
Print speed	5mm/sec to 250mm/sec	Weight	650Kg
Board clamping	pneumatic foils (standard)		



As part of our policy of continuous development, specifications are subject to change without prior notice.

eurolacer
www.eurolacer.com

Europlacer UK
30 Factory Road
Upton Industrial Estate
Poole, Dorset BH16 5SL
UK
Tel: +44 (0)1202 266500
sales@eurolacer.co.uk

Europlacer France
Route de Cholet
85620 Rocheservière
France
Tel: +33 (0)2 5131 0303
contact@eurolacer.fr

Europlacer Germany
Im Böning 24
63695 Glauburg
Germany
Tel: +49 (0)6041 969 2300
info@eurolacer.de

Europlacer Italy
Strada Monte d'Oro 4
34147 Trieste
Italy
Tel: +39 (0)40 0640 180
infoit@eurolacer.it

Europlacer North America
519 US Highway 301 South
Tampa, FL 33619
USA
Tel: +1 813 246 9500
sales@eurolacer-na.com

Europlacer China
Floor 1, Building 1
No.80 Huashen Road,
Shanghai Waigaoqiao
Free Trade Zone,
P.R.China 200131
Tel: +86-21-5868 3500
contact@eurolacer.cn